



Countries by region

Africa

- Botswana
- Cameroon
- Gambia, The
- Ghana
- Kenya
- Kingdom of eSwatini
- Lesotho
- Malawi
- Mauritius
- Mozambique
- Namibia
- Nigeria
- Rwanda
- Seychelles
- Sierra Leone
- South Africa
- Uganda
- United Republic of Tanzania
- Zambia

Asia

- Bangladesh
- Brunei Darussalam
- India
- Malaysia
- Pakistan
- Singapore
- Sri Lanka

Caribbean and Americas

- Antigua and Barbuda
- Bahamas, The
- Barbados
- Belize
- Canada
- Dominica
- Grenada
- Guyana
- Jamaica
- Saint Lucia
- St Kitts and Nevis
- St Vincent and The Grenadines
- Trinidad and Tobago

Europe

- Cyprus
- Malta
- United Kingdom

Pacific

- Australia
- Fiji
- Kiribati
- Nauru
- New Zealand
- Papua New Guinea
- Samoa
- Solomon Islands
- Tonga
- Tuvalu
- Vanuatu

The Commonwealth Memorial Garden

St. George's Garrison Church

Initial Brief:

The brief will be developed as part of the feasibility study process, in liaison with The Woolwich Garrison Church Trust, Stakeholders and through consultation.

The initial Concept has been well received:

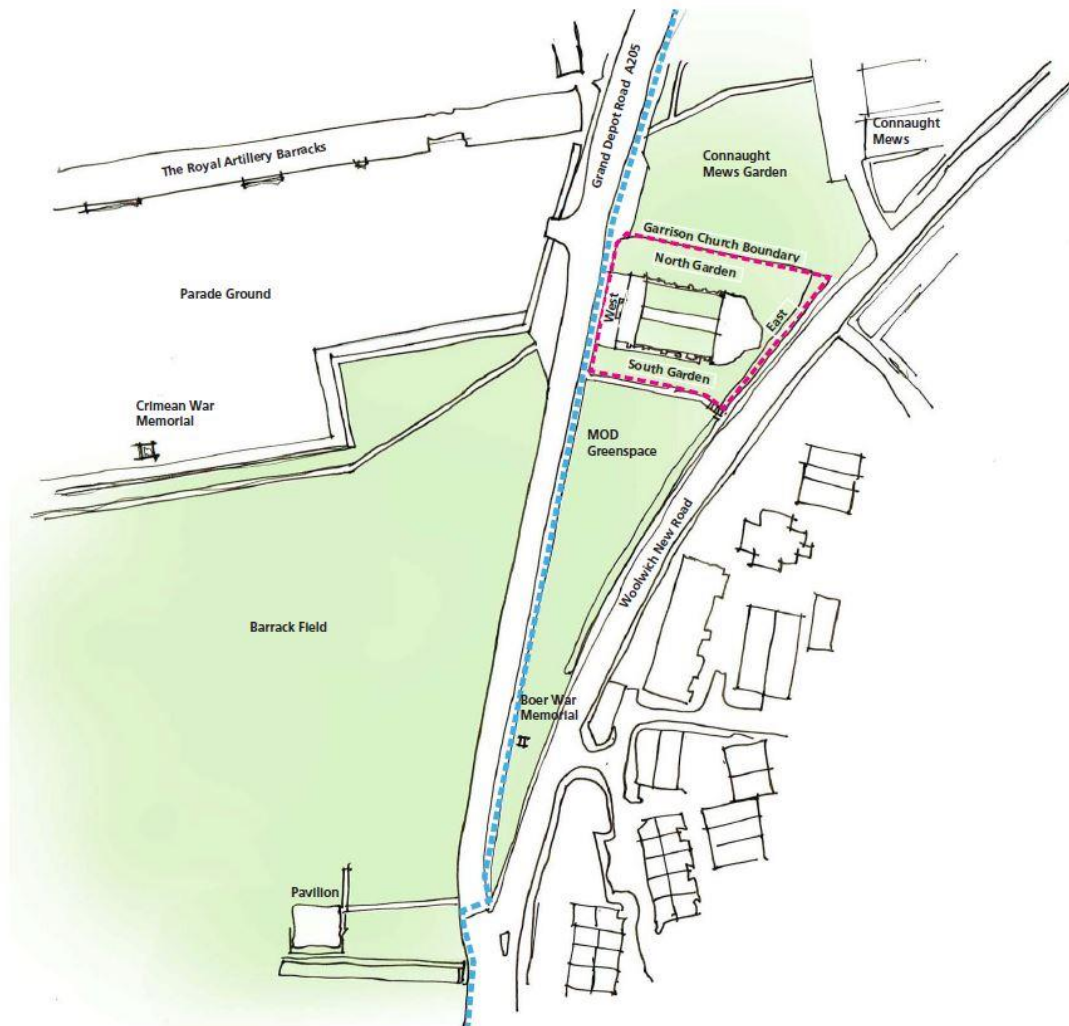
To create themed areas within the garden, taking inspiration from the Commonwealth regions, as shown by the map of the Commonwealth to the left.

Proposed Garden Areas:

- Africa
- Asia
- Caribbean and Americas
- Europe
- Pacific

Other important areas of the developing brief include:

- Within the themed garden areas above; creating space for particular memorials, such as plaques or sculptures, that will become important areas of the garden for visitors from the Commonwealth.
- Enhancing the community offer, reaching out to local groups with Commonwealth links.
- Enhancing the educational offer; creating a garden that can be maintained by volunteer and community gardeners, with professional assistance.
- Developing a planting strategy that links to the Commonwealth regions, as far as possible within our climate. This would include edible produce, from Herbs to Fruit.
- Sustainable Design; with zero carbon footprint.
- Use of Water as a feature and for irrigation, re-using water collected from the roof.
- Creating a fully accessible step free circulation route with other less accessible routes to allow maintenance and children to explore.
- Creating a mix of seating areas, with space for wheelchair users.
- Contributing to financial sustainability, by enhancing the visitor and private function appeal of the Church.
- Respecting and enhancing the heritage value.
- Enhancing the sites ecology and biodiversity



The Commonwealth Memorial Garden

St. George's Garrison Church

Site Analysis:

The Main Entrance to the West: The main Church entrance faces Grand Depot Road and onwards to the parade ground. Originally this small frontage had a garden character with formal railings and planting marking the boundary. The current situation of scrappy hard surfacing and low wall could be significantly enhanced to announce the entrance and complement the outstanding elevation behind.

North and South Gardens: The two principal areas of garden to be developed lie to the north and south of the church. These spaces are very different; the space to the north being naturally sheltered and private and the space to the south being more open.

Early maps indicate that the front boundary to the west extended along the south garden boundary and a secondary entrance was accessed from the footpath: This might be an element worth reinstating or at least referencing in the updated garden proposals.

East Garden: There is a steep drop-off down to the Woolwich New Road level, with a high retaining wall with railings over. This gives quite a dramatic feel and allows views to the north east over Woolwich. We would like to reinstate the connecting path here, linking the north and south gardens. This path would also give access to the crypt.

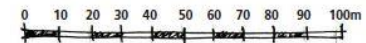
The inner 'Aisle' Gardens within the footprint of the church: The north and south Aisles are laid to grass. This allows flexibility with seating or tent structures to be erected for events. There are well cared for planted borders adjacent to the church walls to the north and south, with memorial plaques on the walls.

There is a desire to give greater definition to the Nave Path both in terms of size and materiality, to reflect the importance of what was once a fine tiled floor.

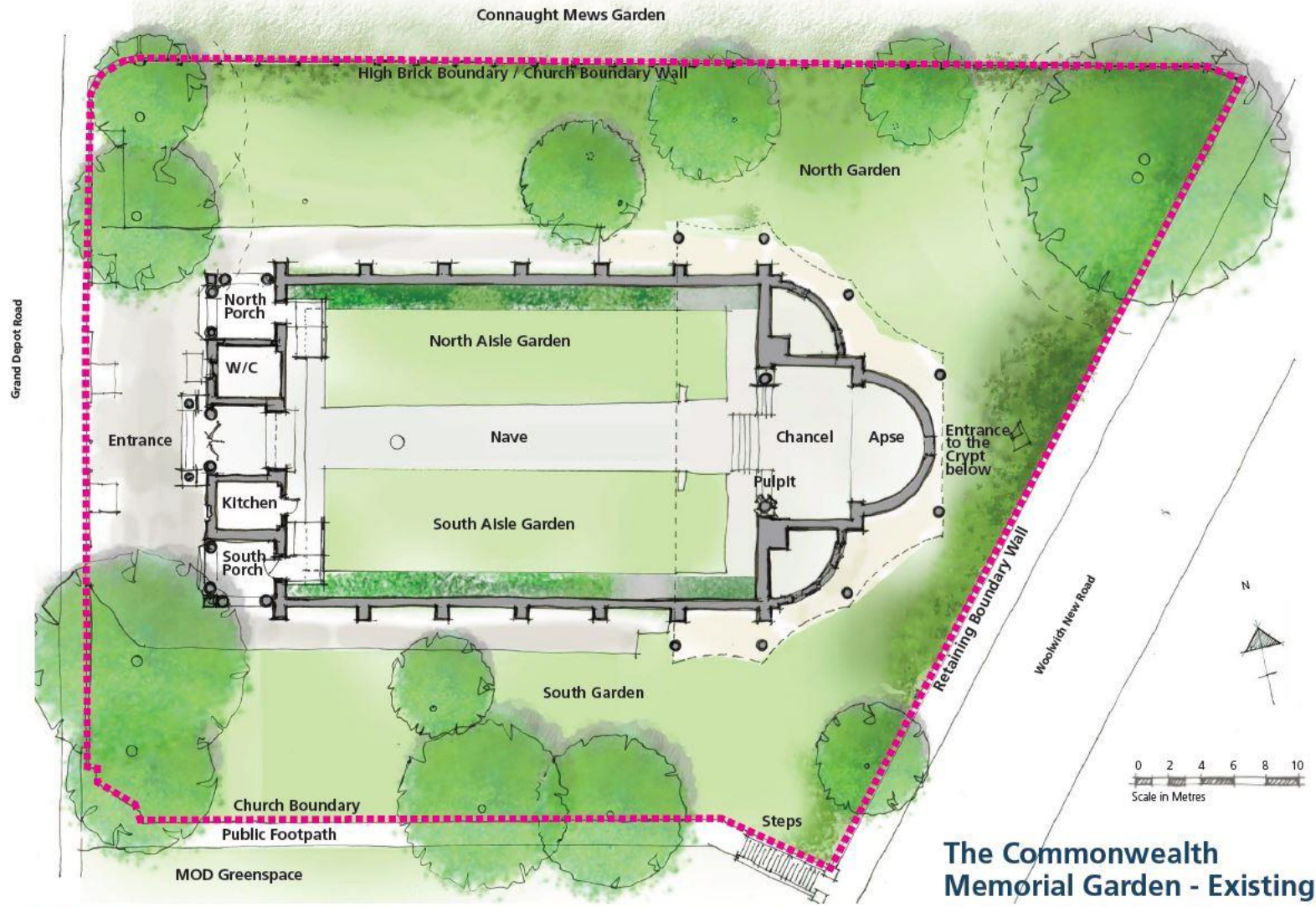
Connections: Connecting to the MOD greenspace to the south will be considered and might include a memorial trail to link to the Boer War Memorial. The Woolwich History Walk passes to the west; our hope is that the Church will be very much a part of the developing appreciation of the wider area's rich history.

North

Woolwich History Walk

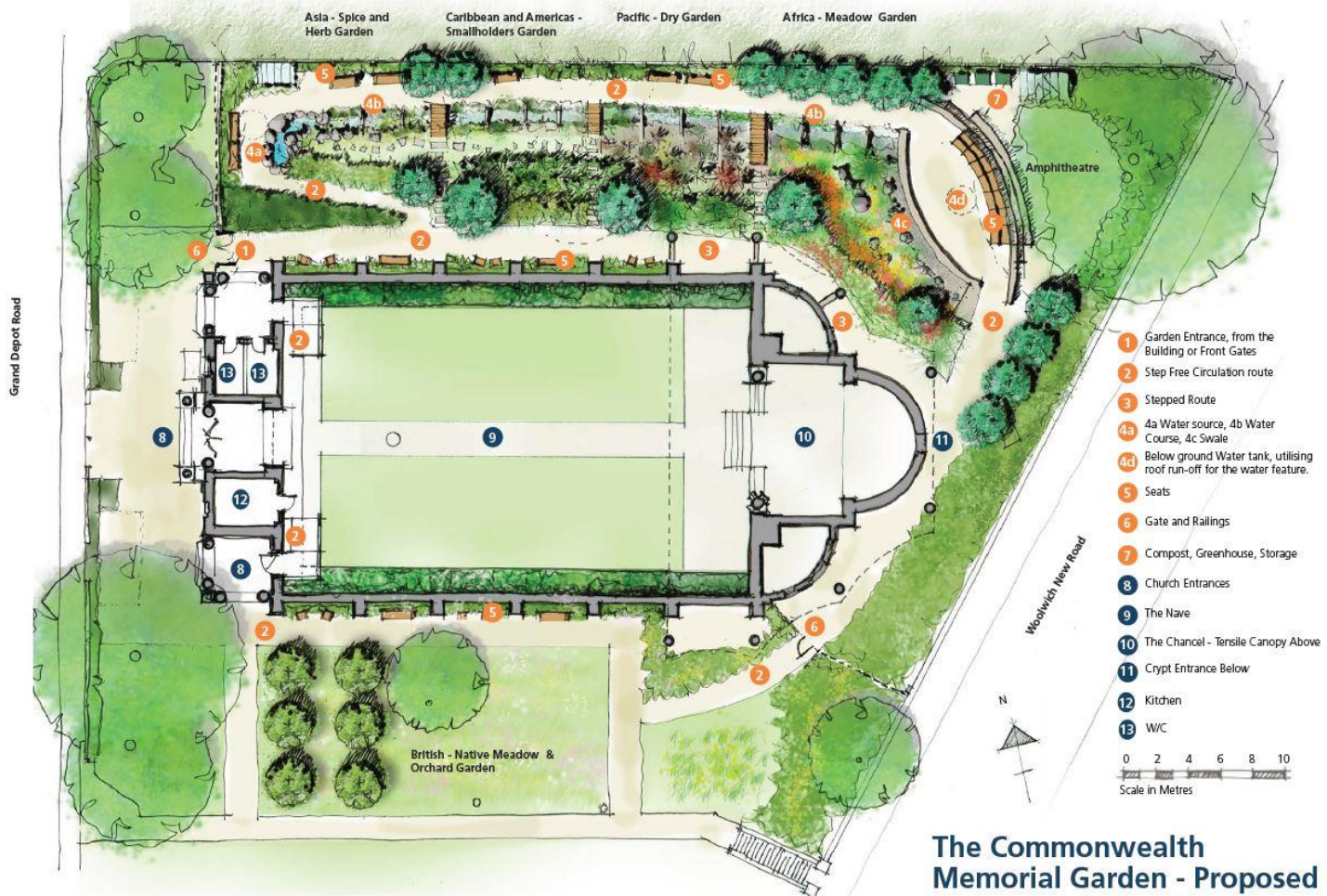


Scale 1:1250 @ A3



Existing Plan - The Commonwealth Memorial Garden - Ireland Albrecht Landscape Architects - 30th April 2019

The Commonwealth Memorial Garden - Existing
 St. George's Garrison Church



Sketch Proposal - The Commonwealth Memorial Garden - Ireland Albrecht Landscape Architects - 30th April 2019

The Commonwealth Memorial Garden - Proposed
St. George's Garrison Church



Hyde Hall Dry Garden



Above: Nymans Garden - South African Meadow



Great Dixter - British Meadow



Tower Hill Memorial for the Commonwealth War Graves Commission



Dry Swale

Relevant Ideas and Projects for Inspiration:



Irrigation - Foot Pump above and Solar Below



Wet Swale



The Commonwealth Memorial Garden - Inspiration
St. George's Garrison Church

Inspiration - The Commonwealth Memorial Garden - Ireland Albrecht Landscape Architects - 30th April 2019